

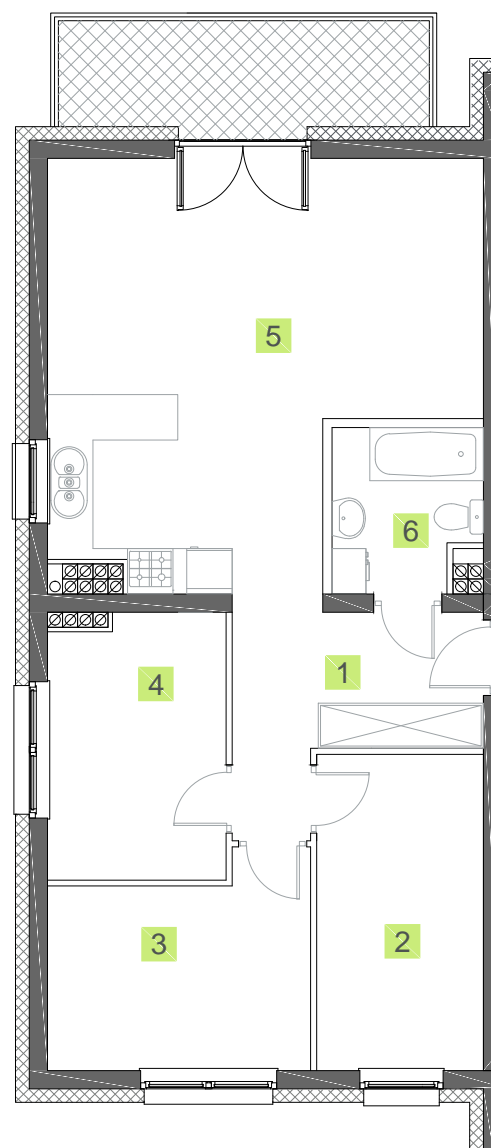
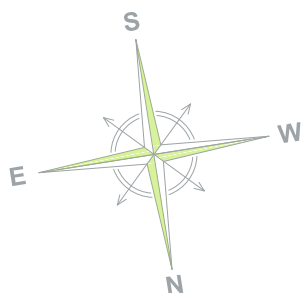
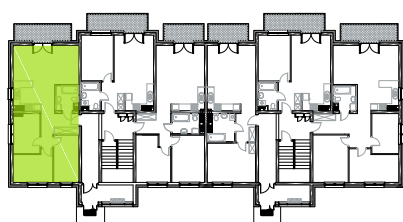
BUDYNEK NR 2

PARTER

POWIERZCHNIA 63,74 m²

- | | |
|--------------------|----------------------|
| 1. Korytarz | 6,98 m ² |
| 2. Sypialnia | 8,95 m ² |
| 3. Sypialnia | 8,77 m ² |
| 4. Sypialnia | 7,90 m ² |
| 5. Salon z aneksem | 27,31 m ² |
| 6. Łazienka | 3,83 m ² |

Balkon 7,01 m²



0m 1m 2m 3m 4m
1cm = 1m