

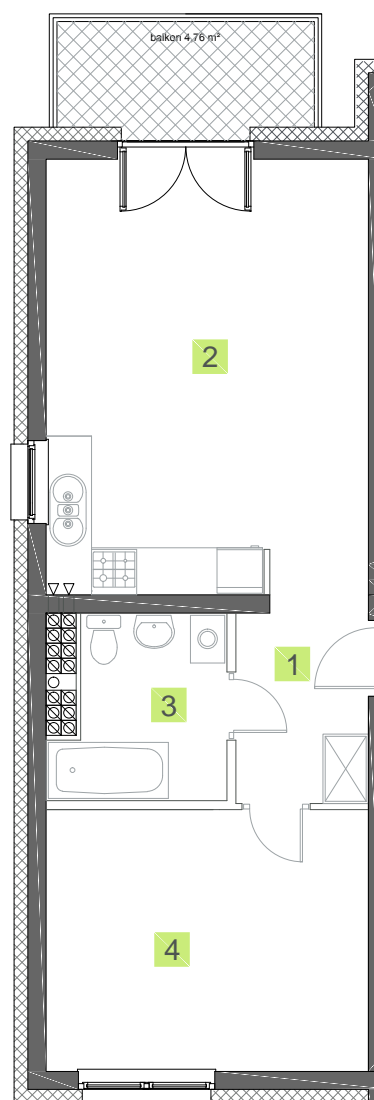
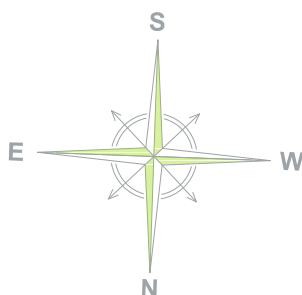
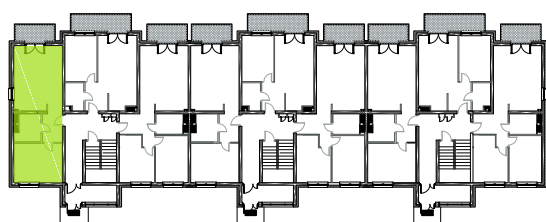
BUDYNEK NR 1

PARTER

POWIERZCHNIA **47,63 m²**

- | | |
|--------------------|----------------------|
| 1. Korytarz | 4,24 m ² |
| 2. Salon z aneksem | 24,09 m ² |
| 3. Łazienka | 4,87 m ² |
| 4. Sypialnia | 14,43 m ² |

Balkon 4,76 m²



0m 1m 2m 3m 4m
1cm = 1m