

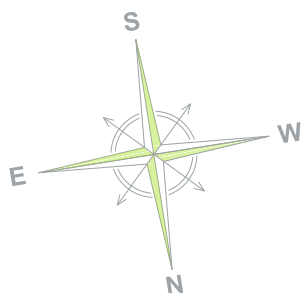
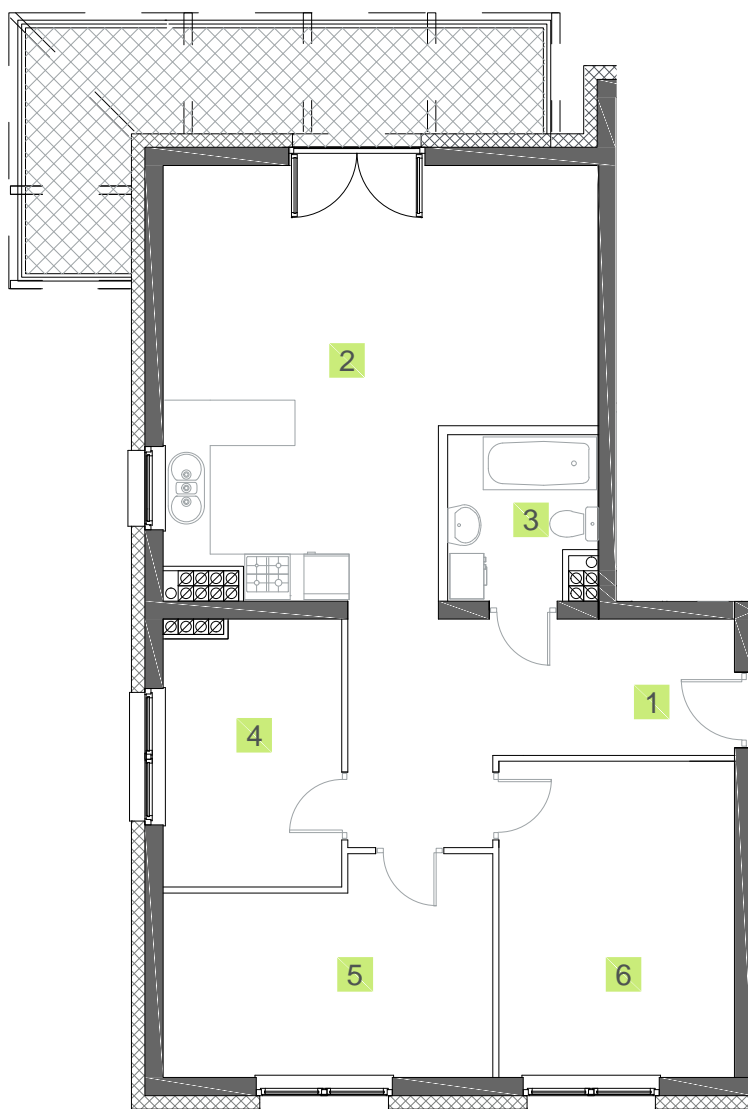
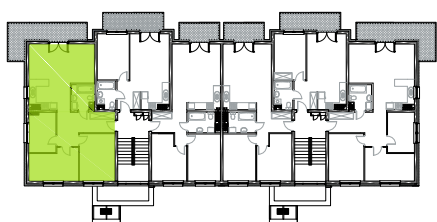
BUDYNEK NR 2

PIĘTRO 3

POWIERZCHNIA **74,35 m²**

- | | |
|--------------------|----------------------|
| 1. Korytarz | 11,23 m ² |
| 2. Salon z aneksem | 27,31 m ² |
| 3. Łazienka | 3,83 m ² |
| 4. Sypialnia | 7,90 m ² |
| 5. Sypialnia | 11,35 m ² |
| 6. Sypialnia | 12,73 m ² |

Balkon 12,36 m²



0m 1m 2m 3m 4m
1cm = 1m