

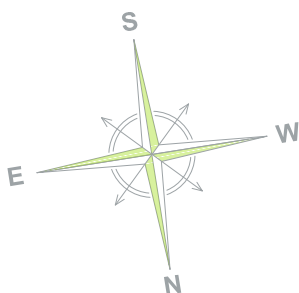
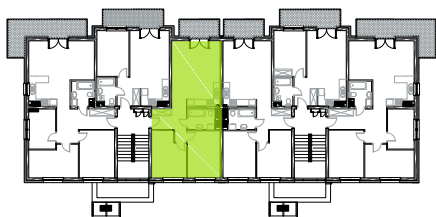
BUDYNEK NR 2

PIĘTRO 1

POWIERZCHNIA **57,71 m<sup>2</sup>**

- |                    |                      |
|--------------------|----------------------|
| 1. Korytarz        | 6,52 m <sup>2</sup>  |
| 2. Salon z aneksem | 24,14 m <sup>2</sup> |
| 3. Łazienka        | 4,04 m <sup>2</sup>  |
| 4. Sypialnia       | 11,64 m <sup>2</sup> |
| 5. Sypialnia       | 11,37 m <sup>2</sup> |

Balkon 4,76 m<sup>2</sup>



0m 1m 2m 3m 4m  
1cm = 1m