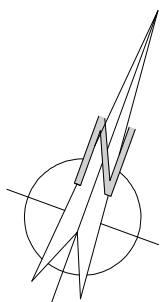
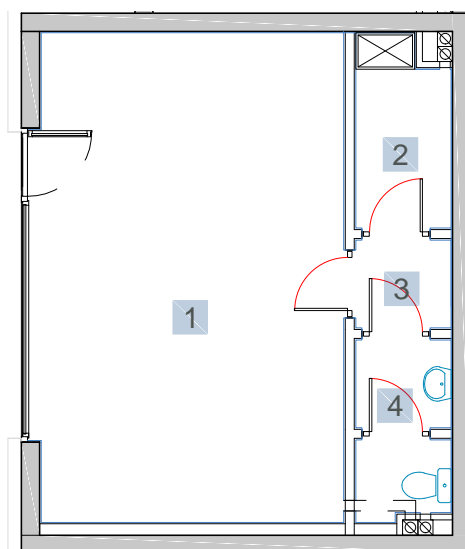


ULICA  
MRONGOWIUSZA  
MRAĞOWO

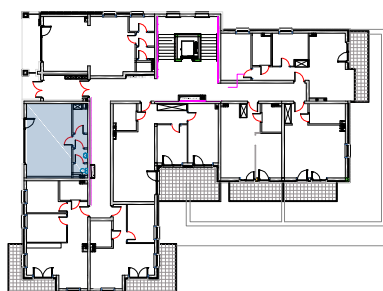
LOKAL USŁUGOWY  
**LU1**



**KONDYGNACJA 3**

**POWIERZCHNIA 33,09 m<sup>2</sup>**

- |                     |                      |
|---------------------|----------------------|
| 1. Pom. handlowe    | 25,88 m <sup>2</sup> |
| 2. Pom. gospodarcze | 3,02 m <sup>2</sup>  |
| 3. Korytarz         | 1,46 m <sup>2</sup>  |
| 4. WC + przedsionek | 2,73 m <sup>2</sup>  |



0m 1m 2m 3m 4m  
1cm = 1m