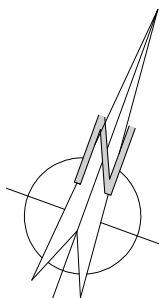


ULICA
MRONGOWIUSZA
MRAĞOWO

MIESZKANIE **M2**

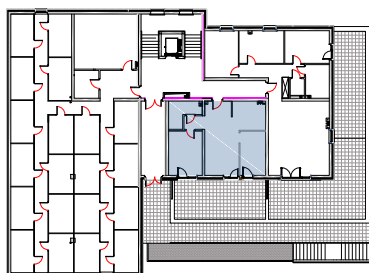
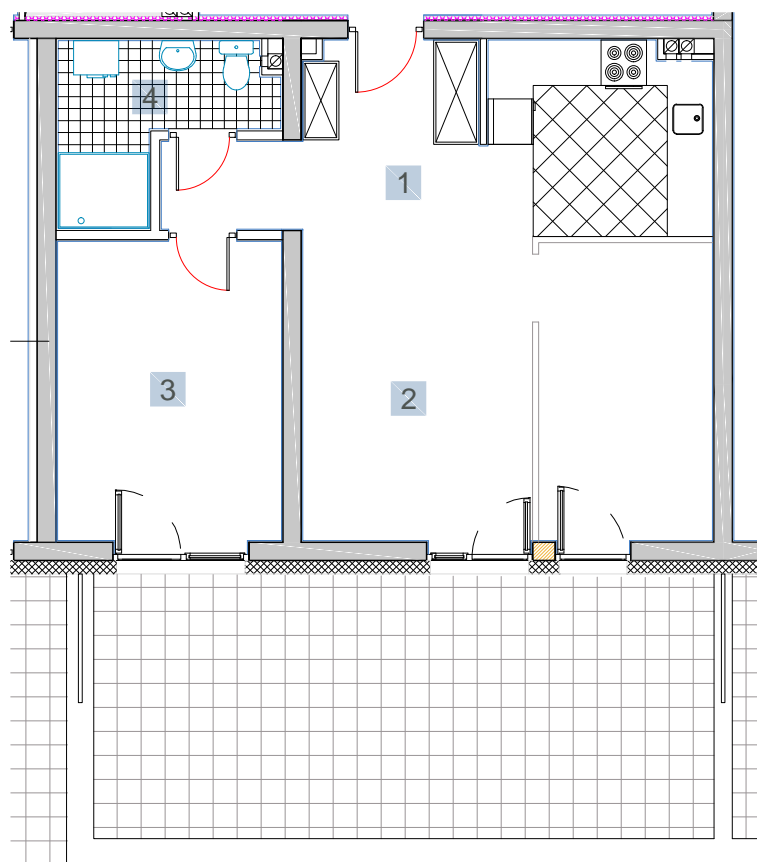


KONDYGNACJA 2

POWIERZCHNIA **54,17 m²**

- | | |
|--------------------|----------------------|
| 1. Korytarz | 7,84 m ² |
| 2. Salon z aneksem | 29,68 m ² |
| 3. Sypialnia | 11,72 m ² |
| 4. Łazienka | 4,93 m ² |

Taras 28,50 m²



0m 1m 2m 3m 4m
1cm = 1m