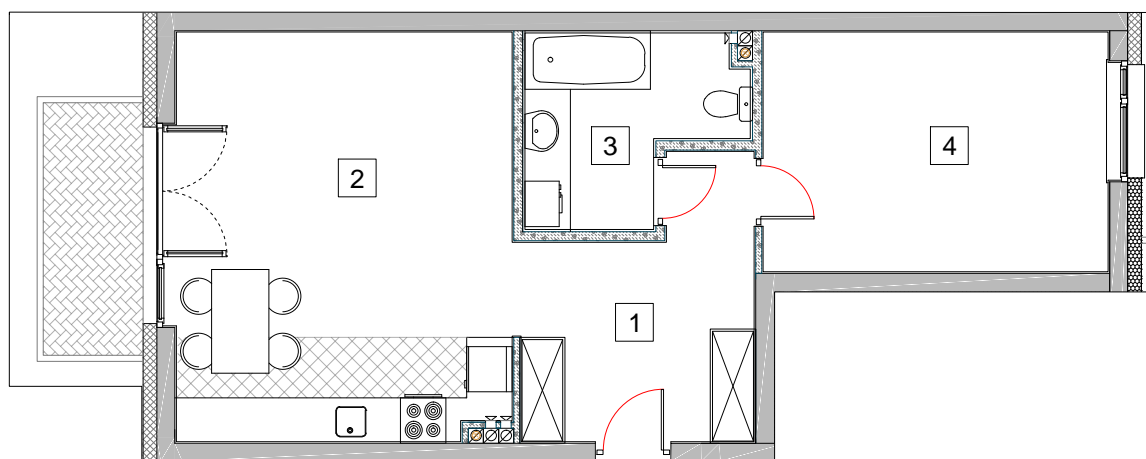
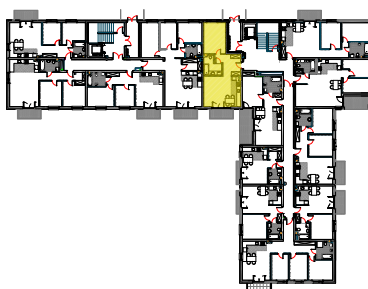
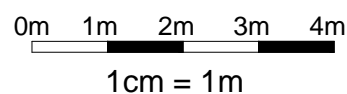
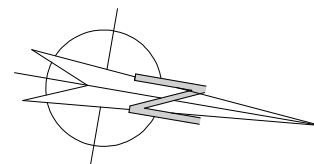


MIESZKANIE M17 KONDYGNACJA +1 (PARTER)



1. korytarz	9,51 m ²
2. salon z aneksem kuchennym	23,87 m ²
3. łazienka	6,08 m ²
4. sypialnia	14,45 m ²



MIESZKANIE M17
powierzchnia użytkowa projektowa

53,91 m²