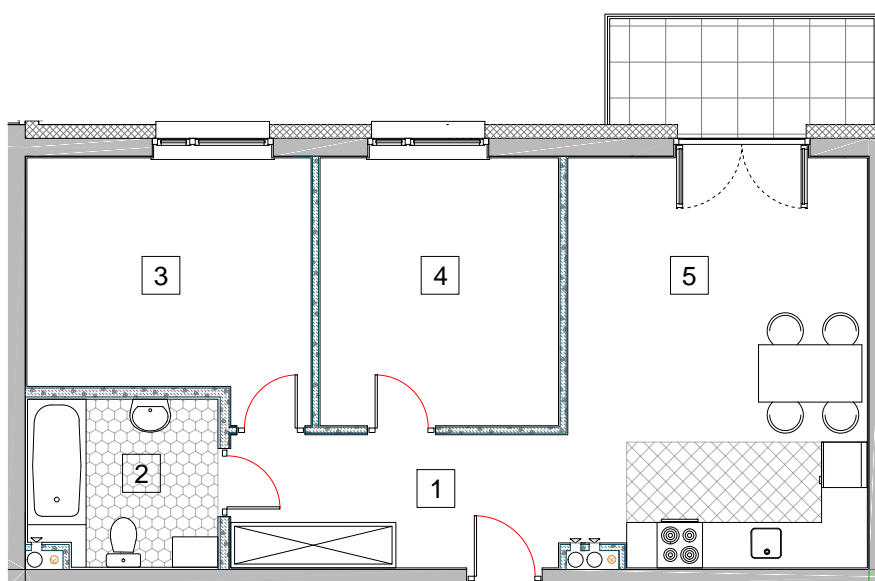
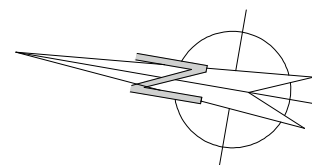


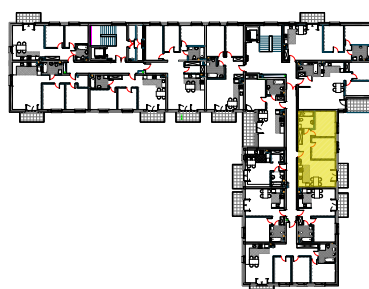
MIESZKANIE M50 KONDYGNACJA +4 (PIĘTRO III)



- | | |
|------------------------------|----------------------|
| 1. korytarz | 7,63 m ² |
| 2. łazienka | 5,40 m ² |
| 3. sypialnia | 11,90 m ² |
| 4. sypialnia | 11,18 m ² |
| 5. salon z aneksem kuchennym | 21,38 m ² |



0m 1m 2m 3m 4m
1cm = 1m



MIESZKANIE M50
powierzchnia użytkowa projektowa

57,49 m²